



Building Britain's
Infrastructure
Since 1963

Building Britain's infrastructure since 1963

Formed 19th March 1963, Breheny is one of the largest family owned civil engineering companies in the UK and included in the NCE Magazine's Top 100 Civil Engineering companies list, winning the Talent Champion award.



We have developed to provide civil engineering services to almost two thirds of the country from our offices in Suffolk, Yorkshire, Cambridgeshire, Kent, Hampshire and Oxfordshire.

Since our creation, we have worked on diverse, award-winning projects across England, covering many different specialisms of civil engineering.

We are experts in highways and bridges, river and marine, and environmental sectors.

Our directly employed workforce and owned plant fleet allows us to be operationally resilient, proactive and continuously improve our high standards.

"Breheny is a family business that builds long term relationships with its customers through the quality of its workmanship and the excellent service it provides"

John Breheny, Chairman.



Our Values:

We value our people, customers and suppliers

- We treat our people fairly and equitably
- We want our people to enjoy their work and progress their careers in a stable, safe environment
- We seek repeat business from customers
- We develop good relationships with suppliers

We have respect for the community and environment

- We minimise our impact on the environment and the communities in which we work
- We support community projects that involve our employees

We believe in openness and honesty

- We comply with all applicable law
- We work as a team with our customers
- We keep our people informed of developments within the Company

We take pride in what we do

- We do everything to the highest possible standard
- We reinvest profits to maintain an extensive and modern plant fleet
- We continuously improve our performance

Quality Workmanship:

Workmanship and quality of service that exceed client expectations is an area of pride for all within the Company. Our workforce at all levels are provided with a continual regime of formal training, while audits of all of our sites ensure compliance with our management systems

Our robust Integrated Management System ensures that our operations are consistently carried out safely and efficiently in a sustainable manner to deliver high quality assets to our clients. The system applies to all employees and partners in our supply chain, detailing procedures, systems, actions and responsibilities.

The system has been audited and accredited by NQA and Achilles to the following standards:

- **ISO 14001:2015** Environmental Management
- **OHSAS 18001:2007** Health and Safety
- **ISO 9001:2015** Quality Assurance
- **ISO 50001:2011** Energy Management





Committed to achieving the highest possible standards

Breheny Civil Engineering Ltd is committed to achieving the highest possible standards of Health, Safety and Environmental performance on all of its construction projects.



We are committed to ensuring everyone goes home safe everyday; and have implemented a behavioural safety programme in order to achieve continual improvements in our health and safety culture.

The Company's behavioural safety initiative is called "**Think Safe, Work Safe, Home Safe**". This system is all encompassing as it focuses both on safe and unsafe acts. This programme incorporates the principles of visible felt leadership and utilises workplace observations and discussion to generate the necessary changes in behaviour at the point of work.

Our safety performance has been recognised with a RoSPA Occupational Health & Safety Gold Award and we have continuously achieved a British Safety Council International Safety Award since 1984.



Shortlisted for the
Inspiring Change Awards

#InspiringChange
www.inspiringchangeawards.com



Our commitment to Health & Safety is further demonstrated by accreditation toSSIP organisations such as CHAS, and our membership of Health and Safety organisations RoSPA and the British Safety Council. Full details of our SHEQ accreditations and memberships can be found on our website.



Our Behavioural Change Programme was launched at a company Safety Day and attracted over 500 staff, subcontractors and clients to Duxford Imperial War Museum. We planned this event to demonstrate our commitment to Health and Safety and we instigated a companywide site shut down to ensure our teams and partners could attend.

To ensure we fulfil our commitments to SHEQ we employ our own dedicated SHEQ Department who carry out audits and inspections, regular on-site and office based performance reviews, and work closely with our construction teams to offer advice and guidance on best practice.

Breheny Civil Engineering have been on a Behavioural Change journey since January 2016. This has been facilitated by an external provider which has further developed our culture in providing a safe working environment for all our employees.

We have procured professional translation services and graphic designers to create literature and media in Punjabi, Polish and Romanian, including;

- Induction videos for new starters
- Questions and Answer sheet to check understanding
- Laminated Reference Cards that can be used on site, providing key reminders and guidance points, including best practice
- Cartoon style Health and Safety booklets which show universally understandable situations with correct and incorrect working methods.

The pictorial content in particular has been well received by operatives and was nominated for the CECA inspiring change award due to its informal and easy to understand style. This has the benefit of being understandable, regardless of language.





Integrating innovative technology

We are committed to using innovative technologies and information throughout our business and have integrated this into our systems and procedures.

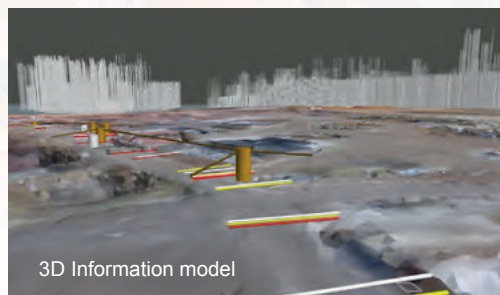
We are committed to Building Information Modelling (BIM) and are integrating this across our business. We use Asite, a Common Data Environment, to store company and project information throughout the scheme's lifecycle. We utilise the BIM naming convention which enhances our ability to work collaboratively with our clients and partners.

Each project/client is different in its requirements so we develop project specific information that aligns to the Employers Information Requirements. We have the capability and experience to provide information in accordance with a number of standards and classifications including COBie (BS1192:4), Uniclass 2015, NRM and the PAS 256:2017 Buried assets.

We have also invested in Autodesk Architecture, Engineering and Construction Collection. This includes AutoCAD, Civil 3D Navisworks Manage, Revit, 3DS Max, InRoads, ReCap Pro and Vehicle tracking.

We use Terramodel and Trimble Business Centre with AutoCAD to provide 3D design data for use with machine control system on our new fleet of Caterpillar excavators. Civil 3D is used at pre-construction stage to build 3D models, used for quantity analysis, programming and machine control.

When necessary, all existing/proposed utilities and drainage are also modelled. Navisworks runs clash detection to highlight any issues which are then immediately highlighted to the Design team to allow a resolution.



3D Information model

Small Unmanned Surveillance Aircraft (SUSA)

Getting coordinates and level information can be time consuming, slowing site surveys. The use of the SUSA has dramatically cut down the time spent on collecting this data.

The density of the point cloud produced allows the surface to be mapped a lot closer to its true representation. A Total Station or traditional method may result in points several metres apart with a straight grade between these.

When using the SUSA for surveying work we are able to offer more deliverables such as;

- A fly-through video of the site
- A site plan which can be used for site progress meetings, assisting the commercial team with valuation assessments and the management of sub-contractors, checking earthwork outputs
- Still photographs covering the whole site enabling a review of an area of interest on the site



» HIGHWAYS & BRIDGES

Cost effective schemes with innovative solutions

For over 50 years, highway and bridge construction works have been core operations for Breheny. We offer our extensive Principal Contractor experience, including S278 and S38 works, on construction and maintenance works for all types of highway, from minor roads to motorways and major route construction.

Our highly experienced team is committed to delivering cost effective schemes with innovative solutions. Our clients include many local highway authorities, commercial land owners and developers. We have experience of collaborative frameworks, working with many local authorities in England.

Breheny has established an excellent reputation for high quality works with high productivity levels, emphasised by clients requesting our services on other schemes and accelerating additional phases of work.

We recognise that works in this sector can have a major impact on the local community. We routinely liaise with our clients, local authorities, and stakeholder groups to ensure minimal disruption to the local people and businesses. We also strive to maximise our contribution to the communities in which we operate, using local specialist subcontracted resources to supplement our directly employed workforce, as well as providing a wealth of development and CSR opportunities.

"Bury St Edmunds Eastern Relief Road won an ICE Merit Award for Technical Excellence and Innovation"



» HIGHWAYS & BRIDGES



North Bexhill Access Road

This project for Sea Change Sussex was designed to provide a strategic link between the A269 and the Combe Valley Way Link Road, by opening up the adjacent land for future development. The works consisted of the construction of a 2.4km single carriageway road, along with a cycle/footway.

We undertook the role of Principal Contractor on this scheme, working in collaboration with East Sussex County Council, who adopted the completed access road under a Section 38 agreement. The project also includes Section 278 agreements to construct three new roundabouts and tie an existing fourth roundabout onto the new access road.

The site had some ecologically sensitive areas, as well as ancient woodlands that needed consideration prior to and during the works. One of these areas required the construction of a large embankment, consisting of a 34m long culvert, 900 CMC piles, with Geogrids for stability and drainage purposes, Terramesh units, gabion baskets and circa 40,000 cubic metres of fill material.

Our works to this embankment received the ICE Brassey Award (Kent and East Sussex) for 'Engineering Excellence'.



Bedford Western Bypass

This design and build project included the construction of 2.2km of new highway, linking the A428 and A6, including a new 47m bridge over the Midland Mainline railway line and a pedestrian subway.

We undertook the role of Principal Contractor for this high profile, £16m award-winning scheme for Bedford Borough Council. The works included the construction of 2.2km of S278 adoptable carriageway between the A6 and the A4280, and the modification of the existing roundabouts at each end of the new road. Our expert Planners carefully programmed traffic management, which included night time road closures, to ensure minimal disruption to highway users during our works.

The installation of a 47m span road bridge over the Midland Mainline Railway, was made possible through effective collaboration with Network Rail, which ensured that works were successfully delivered within the allocated five night time possessions.

Due to the proximity of the River Great Ouse, the road had to be constructed on an embankment. The bridge embankments also required substantial earthworks. In total, we moved over 120,000m³ of material to achieve the cut/fill balance.

Recognised as 'Highly Commended' at the East of England ICE Merit Awards for Sustainability; and attracted a 'Beyond Compliance' Considerate Constructors Scheme award.



Bury Eastern Relief Road

This £17 million relief road for Suffolk County Council, included five new roundabouts and the major reconstruction of junction 45 of the A14, near Rougham.

We fulfilled the role of Principal Contractor, working in collaboration with Suffolk County Council (CC) to connect Bury St Edmund's Eastern industrial areas to the A14. As well as five new roundabouts, we also constructed a separate cycle way to provide connections from Moreton Hall to Junction 45 at the Village of Rougham.

This relief road not only improves access to the A14, but is also supporting economic growth in the local area by opening up future industrial and residential plots for development. With a dedicated Public Liaison Officer and a bespoke website (featuring the latest news, plans and site contact details) we kept all stakeholders and local residents up to date as the works progressed, including Highways England during the works to the busy A14 junction.

Effective collaboration and communication with Suffolk CC was essential to the successful delivery of the scheme. We utilised our common data environment Asite, which we shared with Suffolk to allow up to date and accurate document control/sharing between all parties. Our onsite compound was shared with Suffolk CC, which ensured continuous communication was maintained throughout the project.



Sundays Hill Bypass

Working for a consortium of three national house builders, this £10.9 million design and build project involved the construction of a new by-pass at Burslesdon, near the M3-M27 intersection.

The project was built to Hampshire County Council's specification to allow adoption under a Section 38 agreement and both tie-ins for the road were completed under Section 278 agreements. This involved considerable liaison with the local community and stakeholders to ensure that potential disruptions were mitigated effectively throughout the works.

The site was ecologically sensitive and a great deal of work was done to preserve the local flora and fauna. Part of the project was to construct a new 20m single-span concrete bridge, which sits on piled 8m high concrete abutments. This bridge had the added value of allowing bats to traverse the valley containing their natural habitat, whilst avoiding vehicular traffic.

We came up with a value engineering solution on the reinforced embankments on the bridge, which not only reduced land take on the project, it also mitigated the risk of differential settlement.

Extensive experience in river and marine civil engineering

Breheny offers extensive experience in the river and marine civil engineering sector delivering a wide range of projects covering areas such as gauging stations and watercourse maintenance, trash screens, piling, timber and rock groyne construction, beach reprofiling and public access works.

Due to the nature of works in this sector, we regularly operate in environmentally sensitive locations that are designated Sites of Special Scientific Interest (SSSIs), Ramsars, Special Areas of Conservation (SACs), or Special Protection Areas (SPAs).

Our experience includes extensive works with the Environment Agency, including being one of 7 contractors on their first national framework, as well as our current involvement on multiple minor works and maintenance frameworks across England.

Alongside these maintenance projects we specialise in delivering large multi discipline, coastal and river defence schemes. We can incorporate our expertise of highway projects to deliver sea front public realm projects with minimal disruption to the community.

"We are proud to have won several awards for our River and Marine Projects"

- Lustrum Beck Flood Alleviation - **Flood and Coast Project Excellence Award, Working in Partnership**
- Margate Flood and Coast Protection – **ICE Merit Awards**
- Felixstowe Sea Front Gardens - **ICE Merit awards**





Lustrum Beck Flood Alleviation Scheme

The design and construction of 600m of linear flood defences for the Environment Agency and Stockton Borough Council.

The Lustrum Beck scheme was a joint venture between the Environment Agency and Stockton Borough Council. We acted as Principal Contractor under our existing Northern Minor Framework contract with the EA. The scheme involved the construction of two new floodwalls and a new flood embankment.

To maintain the aesthetic appeal of the area, we constructed both floodwalls using masonry clad reinforced concrete. The first wall was 130m in length and was constructed around an existing smaller wall, which remained in-situ to maintain the defence level during construction. The second floodwall ran adjacent to a footpath and a wetland habitat area. The embankment consisted of 1000m³ imported fill material, two retaining walls and drainage works.

This project was part of a wider scheme for the area, our elements were completed on time and on budget with additional work being allocated to us directly by clients. This project received the following awards:

- Flood and Coast Project Excellence Award, Working in Partnership – **Winner**
- ICE North East, Robert Stephenson Awards, Medium Scheme – **Highly Commended**
- RICS North East Awards, Infrastructure Category – **Nominated**



Outer Harbour Infrastructure, Great Yarmouth

£5.5m harbour quayside development and storage areas for high profile offshore wind projects for Peel Ports.

This project entailed the construction of a new 25 acre staging area, which now enables 75m wind farm turbines to be assembled before loading onto ships for Scottish Power Renewables' offshore wind farm.

The staging area was constructed using reclaimed sand and 90,000T of type 1 material. The 0.6 acre crane pad, designed to support a 750T crawler crane, was constructed using 500mm reinforced concrete. We installed the 1m thick reinforced concrete heavy lift slab onto no less than 122 piles of 750mm diameter and 23m depth.

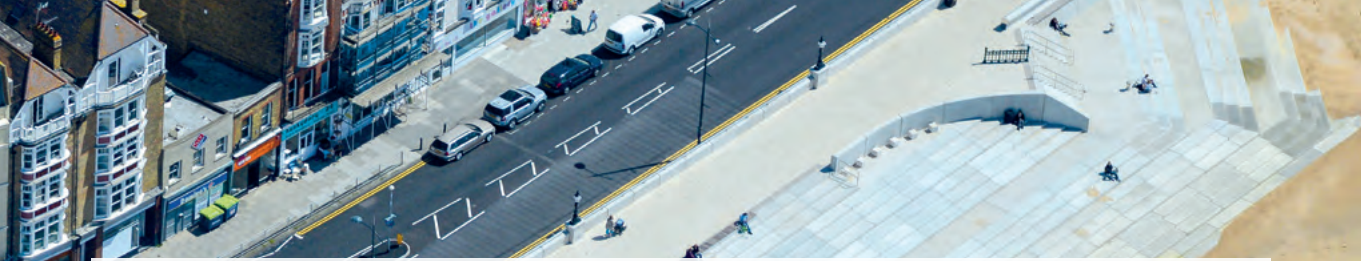
The most challenging and complex element of the scheme was the construction of the roll on – roll off ramp, which involved working very close to the open tidal water. The demolition of the existing wharf wall was completed without any debris entering the water, ensuring that there was no damage to wildlife or the surrounding marine environment.

Specialist in environmental improvement works

Our experience in the delivery of waste management and recycling construction projects spans over 30 years. During this time, we have worked with many of the major waste management companies and multiple local authorities, undertaking projects ranging from the construction of waste transfer stations to anaerobic digestion facilities and landfill engineering projects.

Breheeny is also a specialist in environmental improvement works, such as developing public areas in a natural, ecological environment. Examples include seafront garden and public open space watercourse projects, promoting nature and general wellbeing.

Our project experience includes frameworks and standalone projects. Our reputation for efficient and cost effective works within this sector has frequently led to Breheeny being selected to return to the same site for further phases of work.



Felixstowe Seafront Gardens

Multi-award winning £3.1m restoration and repair project to the historical seafront gardens, incorporating hard and soft landscaping for Suffolk Coastal District Council.

As Principal Contractor for this project, Breheny successfully undertook the significant repair and upgrade of the highly pedestrianised Grade II listed park gardens, spanning 1km along Felixstowe seafront. The scheme also included stabilising the cliffs with case driven piles.

We maintained public access along the front throughout the construction period by phasing our works into 8 separate 'garden' sections, with only isolated, short-term, closures to facilitate plant and vehicle movements. We worked collaboratively with Suffolk County Council to value engineer the project to realise financial savings without compromising aesthetic appeal.

Breheny's performance on this prestigious scheme attracted the following awards and accolades:

- RIBA Suffolk Craftsmanship Awards - **Winner**
- RICS East of England Award for Regeneration - **Winner**
- Considerate Contractors 'Performance Beyond Compliance' – **Winner**
- Landscape Institute Awards - **Highly commended**
- ICE East of England merit awards, Team Achievement - **Highly commended**



Bells and Mocketts Pumping Station, Kent

Construction of the new £1.5 m Bells Pumping station for the Lower Medway Inland Drainage Board, enabling the old pumping station to be decommissioned.

This project included the installation of a permanent cofferdam, constructed to very high tolerances. Concrete pours included a 650mm thick base slab within the 30m x 10m cofferdam. A concrete spillway was constructed to allow the excess fresh water from the surrounding farmland to discharge into the sea.

The mechanical and electrical phase comprised of the installation of two fully enclosed Archimedes screw pumps, capable of pumping up to 3m³ of water per second. These pumps were employed because of their high efficiency and their allowance for the safe passage for eels, from fresh to salt water.

A large control kiosk was also installed at the top of the concrete structure, to house the instrumentation for the pumps and mechanised weed rake.

Terrasite

Created to compliment the services already delivered by Breheny Group, Terrasite Ltd was formed in April 2017, by John Breheny to provide more conventional groundworks services, in order to fully support our client's needs.

Our senior management team has over 100 years of combined experience in the groundworks and construction industry, ensuring that projects are completed that exceed our client's expectations. Terrasite Ltd acts as a stand-alone business, but also supports Breheny as and when any project requires.

Groundworks

Our Groundworks projects range from £500K to £4.5m, for both commercial and residential clients. We have experience of working in both greenfield and brownfield site environments. Our portfolio includes, private housing, social housing, hospitals, schools, industrial and retail units.

Construction

As an additional service to clients, we also carry out bespoke construction projects. Working in partnership with clients helps us to create early stage collaboration, which adds benefits to our schemes, such as any possible cost savings and value engineering innovations.

Terrasite Ltd

Flordon Road, Creeting St Mary, Ipswich,
Suffolk, England, IP6 8NH

T. **01449 726939**

E. **enquiries@terrasite.co.uk**

W. **terrasite.co.uk**



Royston Gateway Development

Groundworks and Construction by Terrasite supported the civils works delivered by Breheny Civil Engineering to provide a collaborative and best value approach.

This design and build project, totalling in excess of £7m for a new industrial area, featured new retail stores and required the highest quality finish.

Our works at Royston included all of the groundworks, foundations and a steel frame, using all in house resources. Our involvement in this scheme required us to work collaboratively with Breheny Civil Engineering, developing extensive phasing plans to avoid disruption and sharing resources to ensure the smooth running of the site.

This approach to our projects enables us to deliver to the same high standard and lower risk for all of our clients.



NETWORKX UTILITIES

When planning a development, Networkx Utilities can ease the strain by taking control of your utility connections. When we are engaged early, we can save our clients precious time and money by making informed decisions, and ultimately providing cost certainty for the project.

We provide a single point of contact for all your utility requirements, and our full range of services will help reduce overheads and timescales. Our regulatory knowledge, along with our technical expertise, will prove to be an essential prerequisite when planning your next development.

Networkx Utilities provides a complete developer service from initial consultation through to design, installation and ultimate completion. As our client, your repeat business is of the upmost importance to us. We work hard to ensure that you receive a first class seamless service with the best engineering and commercial solutions for your development.

Our unrivalled experience and proficiency in the actual installation of mains and services make us best placed to offer the right infrastructure and connections package for your development. We do not manage from afar. We have a deep understanding of the practical methodology when it comes to utility infrastructure installations.

Networkx Utilities Ltd

5 Canada Close, Banbury, Oxfordshire,
England, OX16 2RT

T. **01296 771243**

E. enquiry@networkxutilities.co.uk

W. networkxutilities.co.uk



Alconbury Weald Enterprise Zone

We have won more than ten contracts on this new 1400 acre development, sited on the redundant RAF Alconbury.

As part of our responsibilities we are responsible for the management of the utility installations. We have arranged UKPN, Virgin, BT, Anglian Water potable and foul and GTC, who installed gas and power connections.

To date we have installed; 41,515m utility and service ducting, 227 utility draw pits, 133 street lights, 1440m potable water mains in HDPE and ductile iron, 2 foul water pumping stations and 1 electrical substation.

We have delivered the strategic water mains for the site and the service mains to a number of individual development parcels under a self-lay agreement with Anglian Water.

Networkx working with Breheny has benefits in terms of shared resources, strong communication, shared responsibility and a common goal.





Building Britain's Infrastructure Since 1963

For any enquiries please contact us at:

Breheny Civil Engineering Ltd (Head Office)

Flordon Road
Creeting St Mary
Ipswich
Suffolk
IP6 8NH

T 01449 720282
E enquiry@breheny.co.uk
W breheny.co.uk
🐦 [brehenyCivils](#)
in [breheny-civil-engineering](#)

 **Doncaster**

 **Huntingdon**

 **Banbury**

 **Head Office**

 **Addington**

 **Petersfield**

